

ROSWELL PRESBYTERIAN CHURCH

RECAP

A REFLECTION ON THE AMAZING
IMPACT OF RPC'S MINISTRIES IN
OUR COMMUNITY AND BEYOND.

JULY 2022 — JUNE 2023

Dear Roswell Presbyterian Church Family,

Thank you for being vital to what God is doing here at Roswell Presbyterian Church!

Every fall, we come together to discern how God is calling us to commit to financially support the ministries of the church the following year. Your commitment allows the RPC leadership to make plans for the upcoming year.

It is hard to quantify the impact your generosity will have. From using the church building to host The Drake House's after-school program and welcome unhoused families through Family Promise, to letting over 250 children and volunteers know of God's love through Vacation Bible School, to the hundreds of worship services, Bible studies, mission trips, retreats that happen throughout the year - your commitment makes a difference!

If you've never made a financial commitment to RPC, will you consider doing so this year? If you have, will you consider increasing your commitment? To keep pace with inflation, we rely on the commitment of new and existing congregation members to periodically increase their financial commitments so we can maintain and expand our current level of ministry.

Would you prayerfully consider how God is calling you to financially support the ministry of Roswell Presbyterian Church in 2024?

Thank you for supporting the ministry of Roswell Presbyterian Church!

With appreciation for your generosity,



Jeff

Rev. Jeff Meyers
Senior Pastor

OUR MISSION STATEMENT

Roswell Presbyterian Church is a family of faith united in Jesus Christ to love with our head, heart, and hands.

Strategic Initiatives

In order to build on our blessings, we believe God is calling us to extend our ministry in three key strategic areas:

Engage more people in worship

By continuing our excellent traditional and modern services, we hope to engage more people in worship, especially those who are not yet involved.

Enhance missional engagement

Mobilize more people for mission and service in our community and beyond.

Retain, increase, and broaden our membership

Retain, grow, and broaden those who are connected to the Roswell Presbyterian Church community.



REJOICE

WORSHIP & MUSIC

Worship

190

WEEKLY SUNDAY WORSHIP SERVICES

Includes 42 weeks with four services,
four weeks of one service and six weeks
during the summer with three services.

574

AVERAGE IN-PERSON WEEKLY ATTENDANCE

470 average Traditional
104 average Modern

247

PEOPLE PER WEEK

On average watch the Traditional or
Modern worship on livestream or listen
to the sermon podcast on Sunday.

113

AVERAGE MONTHLY PODCAST LISTENS

Sermon Series Podcast.

1,975

ATTENDED CHRISTMAS EVE

In-person to one of the
five worship services.

420

LIVESTREAM VIEWS

On Christmas Eve for one of the three
livestream worship opportunities.

280

YOUTUBE VIEWS

Of the Christmas Eve services
after December 25, 2022.

1,640

ATTENDED EASTER SUNDAY

In-person to one of the
seven worship services.

660

LIVESTREAM VIEWS

On Easter Sunday for one of the three
livestream worship opportunities.

258

YOUTUBE VIEWS

of the Easter Sunday services
after April 9, 2023.

23

BAPTISMS

38

FUNERALS

Music

145

RPC CHOIR MEMBERS
PERFORMED IN THE VOICES
OF MIMOSA CONCERT

In collaboration with Roswell United
Methodist and First Baptist Roswell.

7

CHORAL SCHOLARS

50

CHANCEL CHOIR
MEMBERS

21

CANTATE COELI
MEMBERS

14

CARILLION
MEMBERS

20

MODERN SERVICE
MUSIC VOLUNTEERS

25

96:ONE YOUTH
CHOIR MEMBERS

3

CHILDREN'S
CHOIRS

1

CHILDREN'S
HANDBELL
CHOIR

150

MUSICIANS
Glory of Christmas Concert.

882

ATTENDEES
At the Glory of Christmas Concert.

364

LIVESTREAM VIEWS
of the Glory of Christmas Concert and
444 viewed after December 11, 2022.



REPLENISH

MISSION OUTREACH

130+

**BACKPACKS &
SCHOOL SUPPLIES**

Delivered to CDA and NFCC children,
and hundreds of coats delivered
to NFCC families.

100+

**NEW OR GENTLY
USED COATS**

Dedicated to NFCC children.

100

NAM PARTICIPANTS

Turkey Bingo- Aspen Pointe.

4

FAMILIES ON AVERAGE

Stayed at RPC during one of the four
weeks Family Promise was hosted
on our campus.

500+

SANDWICHES MADE

During multiple RPV (Roswell
Presbyterian Volunteers) Events.

80

EASTER BASKETS MADE

During the March 2022 RPV (Roswell
Presbyterian Volunteers) Event.

100+

STOCKINGS STUFFED

During the November 2022 RPV
(Roswell Presbyterian Volunteers)
Event.

150

NAM PARTICIPANTS

4th of July Celebration at Groveway.

23

NAM VOLUNTEERS

Remained active this year!

\$40,000+

**DONATED TO OUR
MISSION PARTNERS**

From the Annual Charity Golf
Tournament on a sunny September
Monday in 2022.

29

NAM PARTICIPANTS

Including 19 kids and 10 adults,
created and filmed an anti-drinking
special service announcement.

5

**LANE ALDERMAN
SCHOLARSHIPS
AWARDED**

Two in 2021 and three in 2022. With
over 100 people attending the
celebration banquet.

\$14,000

RAISED

For the Children's Christmas Fund,
benefitting our mission partners who
support children.

229

SCHOLARSHIPS

Funded for students in Guatemala.

150

VOLUNTEERS

Participated in the churchwide RPV
(Roswell Presbyterian Volunteers)
volunteer day, packing food for
Guatemala.

66,000

MEAL KITS

packaged and shipped
to Guatemala.



REENERGIZE

OUR CHURCH FAMILY

Our Church Family

82

ADULTS

Attended the couples event in January.

46

ADULT LEADERS

Led one of the 35 Adult Groups. Including: Sunday School, Community Groups, Presbyterian Women, or other Bible Studies.

53

PRESBYTERIAN WOMEN

Attended the PW Fall Brunch and 40 women attended the Birthday Gathering.

85

PEOPLE

Attended the Sunday School Fall Kick-Off Event.

50

MEN

Attended the 2022 Spring Men of RPC Retreat.

37

WOMEN

On average, attended one of the GALs Night Out events.

18

ADULTS

On average, attended the churchwide Theology on Tap events, and on average 7 Young Adults attend the monthly Theology on Tap meetings.

22

PARTICIPANTS

Meet regularly for Food and Fellowship.

9

WIT & WISDOM EVENTS

For our grand adult ministry were held on our campus and off-site.

25

MEN

Attended the 2022 Men of RPC Fall Cookout.

92

ADULTS

Participated in the couple's night out in June.

80

WOMEN

Participated in the 2023 one-day retreat.

29

ADULTS

Participated in the Second Tuesday lunch.

Children's Ministry

262

CHILDREN
Attended VBS in June 2023,
including 25 NAM children.

26

PARTICIPANTS
In Preschool Music Camp

166

CHILDREN
In Sunday School for Kick off
Sunday - the highest attendance
for the year.

117

**ELEMENTARY CHILDREN
IN SUNDAY SCHOOL ON ON
KICK OFF SUNDAY,**
The highest attendance for the year.
(2022)

67

CHILDREN
On average, participated
in onCore each week.

61

CHILDREN
Participated in the Spring Musical,
representing four children's choirs.

90

VOLUNTEERS
Led one of the seven classes for
Children's Sunday School (3-year-olds
through fifth grade).

220

ATTENDEES
Easter Family Fellowship event.

35

SHADOW VOLUNTEERS
Served exceptional children.

23

INFANTS AND TODDLERS
On average participated in Parent's
Morning Out.

10

FAMILIES SERVED
In the Expectant Parents Ministry.

49

PRESCHOOL STUDENTS
Attended Sunday School on Kick
off Sunday - the highest attendance
for the year.

ryeX Youth

20

ryeX YOUTH
On average attended the High Noon Summer Bible Study.

42

ryeX YOUTH
Attended the Hilton Head Beach Trip in 2022 and 34 attended in 2023.

20

ryeX MIDDLE SCHOOL YOUTH
On average attend Monthly Outreach Events (MOEs).

25

ryeX YOUTH
Attended "Thursday Night Things."
(Summer 2022)

12

ryeX YOUTH
Thrill seekers participated in a day at Six Flags.
(Summer 2023)

27

CONFIRMANDS

15

NAM STUDENTS
Middle School and High School youth participated in weekly SSOC meetings.

11

ryeX MIDDLE SCHOOL YOUTH
Attended South Wind Summer Camp.

85

ryeX YOUTH
Attended eXtreme Retreat with 31 wonderful volunteers and 14 gracious host homes.

50

ryeX YOUTH
On average, attend weekly "D-Groups."

15

AMAZING ADULTS
Stepped up to volunteer and support the ryeX Youth Ministry.



RELATIONSHIPS

MEMBERSHIP & CONGREGATIONAL CARE

Membership & Congregational Care

94

NEW MEMBERS
Joined the our church family.
(January - December 2022)

62

VISITORS
On average, each Sunday.

295

VISITORS
Combined on Easter
and Christmas Eve

2,453

MEMBERS



RECOGNIZE

OUR BUILDING & DIGITAL REACH

Building & Property

21

HEADSTONES CLEANED AND REPAIRED

In the Historic Cemetery.

2

CAMERAS

Installed to increase campus security.

110

UPDATED SIGNS

Installed to assist people to find their way around our complex campus.

2

HANDRAILS

Installed along chancel entrances for safer entry and exit for clergy and worship participants.

52

SPRINKLER HEADS

Replaced throughout the campus in order to comply with fire code requirements.

Digital Reach

40,000

UNIQUE VISITORS

To our website and 123,000 page views.

148

PEOPLE COMPLETED THE COMMITMENT FORM

During Generosity 2023 the most used form on the website.

113

AVERAGE MONTHLY LISTENS

To the Sermon podcast and an additional 117 listens to Closing the Distance.

74,698

NUMBER OF PODCAST DOWNLOADS

Since it was initiated on January 3, 2019.

1,404

UNIQUE VISITORS

On December 10, 2022, the highest traffic day to our website.

54,482

HOMEPAGE VIEWS

The most visited page of the website.

1,839

PEOPLE

Subscribe to our two weekly emails. The Thursday e-bulletin (60% open rate) and the Weekly Update from Rev. Jeff Meyers (61% open rate).

85%

SUBSCRIBERS

Opened the Holy Week Meditation emails. And 77% opened the Advent Meditations in 2022.

1,715

FACEBOOK FOLLOWERS

763

INSTAGRAM FOLLOWERS

2,927

GOOGLE PROFILE VIEWS

And our profile appeared in 1,438 search results.

5,238

WORSHIP GUIDE PAGE VIEWS

Since it was first published in 2020.

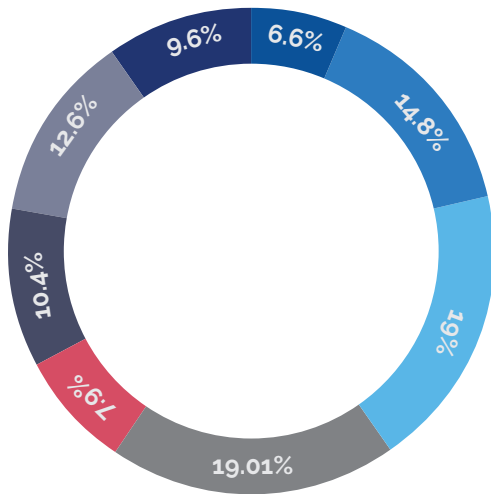


RECOMMIT

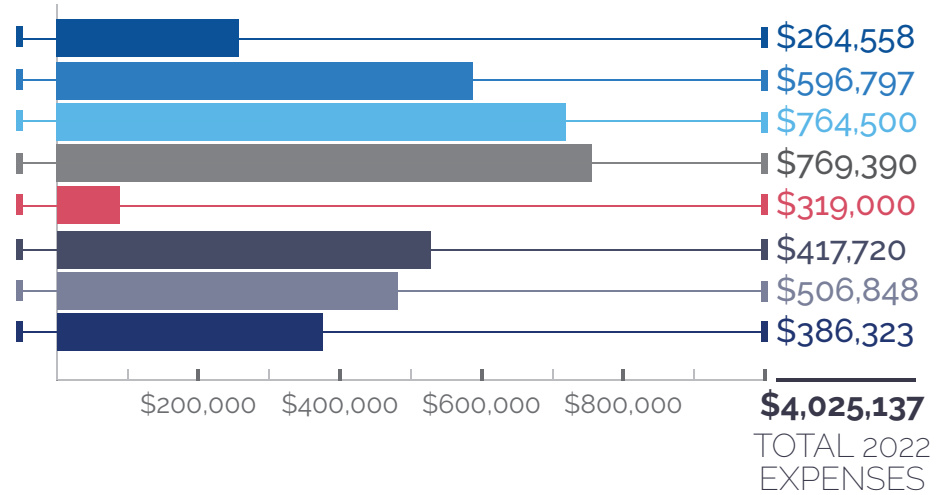
TO ROSWELL PRESBYTERIAN CHURCH

Generosity

(January - December 2022)



- 6.6% | Congregational Care
- 14.8% | Mission Outreach
- 19% | Worship & Music
- 19.1% | Discipleship
- 7.9% | Preschool
- 10.4% | Building & Property
- 12.6% | Administrative
- 9.6% | Mortgage



\$2,292,321

PLEDGE RECEIPTS

\$3,827,968

TOTAL DEBT

\$4,130,578

TOTAL OPERATING REVENUE

\$1,159,626

PERMANENT ENDOWMENT FUNDS

\$413,648

TOTAL BENEVOLENCES

\$4,025,137

TOTAL EXPENSES

How are you being called to make an impact in 2024?

Please prayerfully consider how God is calling you to personally commit to financially support the ministry of Roswell Presbyterian Church in 2024? Your explicit commitment allows the church's leadership to set the ministry and mission budgets for next year.



Commitment Card

Make your 2024 Commitment

Name: _____

Address: _____

Email: _____

Envelope Number: _____



Please complete this card then return to Roswell Presbyterian Church. Or, complete the commitment form at www.roswellpres.org/give

My/Our Estimate of Generosity

Through December 31, 2024, I/we will make the following commitment...

General Ministry Budget

Weekly \$ _____ Quarterly \$ _____

Monthly \$ _____ Annually \$ _____

I/We plan to make the same commitment as last year.

General Ministry Contribution Total \$ _____

Go above and beyond for Mission Outreach with an additional gift...

\$500 \$100 \$50 +10% of my/our General Ministry commitment Other _____

This gift will be provided... One-time Monthly Yearly



ROSWELL
PRESBYTERIAN CHURCH

WORSHIP

Join us in worship Sunday morning in our Traditional or Modern services.

www.roswellpres.org/worship

CONNECT

Explore our many rewarding study and fellowship opportunities.

www.roswellpres.org/connect

SERVE

Participate in mission outreach opportunities in our community.

www.roswellpres.org/serve

MAILING ADDRESS

P.O. Box 988
Roswell, GA 30077-0988

BUILDING ADDRESS

755 Mimosa Blvd.
Roswell, GA 30075

www.roswellpres.org
rpcinfo@roswellpres.org
770-993-6316